



LINLITHGOW

INTERACTIVE

Visitor Guide 2021-22



Attractions



Accommodation



Events



Film Locations



Eat & Drink



Shopping & Services



Walking Trails



Town Map



SCOTLAND

Stirling

Glasgow

Edinburgh

LINLITHGOW


WELCOME TO HISTORIC LINLITHGOW!



Linlithgow Palace and St. Michael's Kirk

If you're ready to explore Linlithgow, you've picked up the right guide! Whether you're a die-hard Outlander fan, love history and walking trails, or just fancy some shopping and a bite to eat, everything you need is right here.

We think you'll agree that Linlithgow makes for a wonderful day (or night) out. It's also the perfect base for a complete central Scottish holiday. There's plenty of adventure to be had in Linlithgow, and we're perfectly located to explore iconic Scottish attractions nearby – all served by a railway station in the heart of the town.

THIS VERSION OF THE GUIDE IS INTERACTIVE! JUST CLICK ON ANY RELEVANT HEADING, ATTRACTION OR BUSINESS FOR MORE INFORMATION ONLINE. CLICKING A  SYMBOL TAKES YOU BACK TO THE FIRST PAGE.

CONTENTS

Linlithgow's main attractions	2-4
Other attractions in the area	5-6
Film locations	7-8
Events	9-13
Where to stay, eat, drink and enjoy	14-18
Town centre map	19
Walking trails	20-32
Shopping and services	33-38
Getting to Linlithgow	39

IMPORTANT NOTICE: At time of publication, national regulations still restrict operation of some attractions, events and businesses, due to the ongoing Covid-19/coronavirus pandemic. This **may affect opening times** shown in this guide. Please check directly with the business/operator before visiting.

LINLITHGOW'S MAIN ATTRACTIONS

Linlithgow is most famous for its profound association with Scottish royalty. There's far more to the town than Mary, Queen of Scots, but her birthplace is a great place to start...

Linlithgow Palace

The jewel in Linlithgow's crown, the Palace is not only the birthplace of Mary, Queen of Scots, but James V, too. Visitors flock to this site of enormous importance to Scottish history and there's nowhere more beautiful to relax on a sunny day than its grounds; the Peel. It's open to visitors every day during business hours (09:30am – 5:30pm in summer, 10am – 4pm in winter).

PLEASE NOTE: AT TIME OF PUBLICATION, LINLITHGOW PALACE IS TEMPORARILY CLOSED FOR STRUCTURAL INSPECTION UNTIL 11TH SEPTEMBER 2021 AT THE EARLIEST.

You can still enjoy it from the Peel!



Linlithgow Palace from the Peel

Linlithgow Loch and The Peel

Unwind in nature with a gentle walk around the Loch. Few town centres are blessed with idyllic nature at such close quarters. Meet the swans and ducks, have a seat at the Peel, take some photographs, and you'll forget whatever ailed you!



Linlithgow Loch and Peel

St. Michael's Parish Church

One of Scotland's finest medieval churches and home of Linlithgow's iconic spire. Consecrated in 1242, much of the current building dates from the 15th century. Open daily at 10:30am, it closes to visitors at 4pm in summer and 1pm in winter. **TEL: 01506 842188**



St. Michael's Parish Church

The Cross / Cross Well

The Cross, with its iconic well, is the town's hub: the location of markets, public ceremonies and festivals. Enjoy a coffee from one of the cafés, or just find a place on a bench, and contemplate the world going by.



The Cross Well - and Burgh Halls behind

Linlithgow Museum

A font of civic knowledge for residents and visitors alike, this museum really demonstrates Linlithgow's history; not only through kings, queens and battles, but industry, innovation and folk history, too. It's not just about the past, either. Did you know that Star Trek's "Scotty" will be born in Linlithgow in 2222? Across the High Street from the Cross Well, the museum is based in the Linlithgow Partnership Centre (also home to the library, police station and council offices) and open every day except Tuesday, 10am – 4pm (1pm – 4pm on Sundays). **TEL: 01506 670677**

Linlithgow Canal Centre

A short walk uphill, south of the High Street, brings you to the Canal Basin, where the Linlithgow Union Canal Society operates the Canal Centre from buildings built for the opening of the Canal in 1822. Here you will find a range of boat trips — some to the Falkirk Wheel — a self-drive canal boat, electric dinghies, crewed charters (for a special occasion, or just a relaxing cruise with your own group), as well as Scotland's only Canal Museum & Tea Room. Open Sat/Sun afternoons from Easter until September and weekdays throughout July and most of August. **TEL: 01506 671215**



Linlithgow's Golf Courses

Linlithgow's golf courses host a wide variety of events, many of which are open to the public. From [Kingsfield Leisure](#)'s fabulous nine-hole course and Family Putting Green to [Linlithgow Golf Club](#)'s 5,851yd course, and [West Lothian Golf Club](#), Linlithgow's golf courses have something for everybody. All offer great value packages and a warm welcome.



Beeccraigs Country Park and Cockleroy

Nestled in the Bathgate Hills, Beeccraigs caters for many leisure activities within its vast grounds. There's visitor information, guides and gifts, and it's home to the award-winning (and carbon-neutral) [Hideaway Café](#). **TEL: 01506 284516**

Adjacent to Beeccraigs Country Park is a prominent hill named Cockleroy. On a clear day, you can see the Perthshire mountains, the Isle of Arran, North Berwick Law, and the Ochils from its 278m summit. Well worth the short, steep walk from the Beeccraigs Country Park car park on a nice day.

OTHER ATTRACTIONS IN THE AREA

We'd love you to spend your whole trip with us in Linlithgow, but there are some spectacular attractions in the wider area... for more information about West Lothian, just click/tap the heading on this page.

The Forth Bridges

The Forth Bridge, a World Heritage Site, which carries the railway north of Edinburgh, is a must-visit. The vista from the historic town of South Queensferry takes in the three major bridges spanning the Forth Estuary: the Forth Bridge (1890), the Forth Road Bridge (1964), and the Queensferry Crossing (2017).



The Forth Bridge

The Kelpies and Helix Park

In Falkirk, a few miles to the west of Linlithgow, where the Forth & Clyde Canal enters the River Carron, is Helix Park and the Kelpies: the world's largest equine sculptures. A café, children's adventure zone, and guided tours make it a great family visit.



The Kelpies

Hopetoun House

One of the most splendid examples of Georgian architecture in Britain. Five miles from Linlithgow, Hopetoun House is set in 150 acres of rolling parkland. The house and grounds are open daily from Easter to the end of September.

Blackness Castle

This castle fortress by the sea was built by one of Scotland's most powerful families, the Crichtons. Blackness was the seaport for Linlithgow in the days of the Stewart Kings. Open all year round (10am – 4pm in winter, 9:30am – 5:30pm in summer).

Bo'ness and Kinneil Steam Railway

Experience the power of steam, riding in a historic carriage, hauled by a lovingly restored steam locomotive. You can also visit the Museum of Scottish Railways, with over 200 locomotives, carriages and wagons, or enjoy a meal or a snack in the station coffee shop. Open on scheduled running days from April to October. **TEL: 01506 822298**

House of the Binns

The House of the Binns is the family home of the Dalrymple family, who have lived there since 1612. It is a National Trust for Scotland property and well worth a visit. The grounds are open all year round (gates shut at 7:30pm) and the house is open from 2pm – 5pm from June – September. **TEL: 01506 834255**

John Muir Way

Linlithgow is a great place to access the John Muir Way; a long-distance walking and cycling route across Scotland's heartland, from Helensburgh to Dunbar, which was Muir's birthplace. John Muir is recognised as the father of national parks in the United States. Born in Scotland, his family emigrated to the USA in 1849, when he was 11 years old.

The Falkirk Wheel

The Falkirk Wheel, the world's only rotating boat lift and an iconic example of modern British engineering, links the Union Canal to the Forth and Clyde Canal. Boat rides, visitor centre, café and shops. **TEL: 08700 500208**



The Falkirk Wheel

FILM LOCATIONS

From [Outlander](#) to [Outlaw King](#), Linlithgow has something for fans of the big and small screen alike. Filmed extensively in and around the area, including scenes set in America, Linlithgow is the perfect hub to explore [Outlander locations](#). For a comprehensive list, you can pick up a paper copy at most sites, or head straight over to [VisitScotland's interactive guide to filming locations across Scotland](#).

Within 30 minutes from Linlithgow, you can reach:

[Linlithgow Palace](#): the entrance and corridors were used as Wentworth Prison, where Claire comes to plead with the Governor to release Jamie.

Linlithgow was also used extensively in filming of [The Outlaw King](#), the Netflix film about Robert the Bruce. The [Palace](#) was used as Perth Castle and outside, overlooking the Loch, for the crowning of King Robert. [St. Michael's Church](#) was used in the wedding scene and for the funeral of Robert's father.

[Blackness Castle](#) was used in key Outlander scenes as the headquarters of "Black Jack" Randall. It's here that Jamie is flogged and that he rescues Claire by jumping from the battlements. It's also featured in **Outlaw King** and as Holyrood Palace in Netflix's [Mary, Queen of Scots](#).



Blackness Castle



Midhope Castle

A short 15-minute drive from Linlithgow lies the most iconic of all Outlander locations: [Midhope Castle](#), Outlander's "**Lallybroch**": the Fraser family home, featuring in all seasons. [Hopetoun House](#) has hosted several Outlander scenes. In the first series, it's the **Duke of Sandringham's home**, the setting for various French scenes, then later (in the third series) the **stables at Helwater** and the front vista is the **Earl of Ellesmere's home**. More recently, it has been used for several period pieces, including 2020 TV drama "[Belgravia](#)" and feature film "[Mr. Jones](#)".

[Bo'ness and Kinneil Railway](#) is a favourite choice for many period films. In **Outlander**, it's the railway station where Claire and Frank bid each other farewell in the 1940s.

[Beecraigs Country Park](#), as well as playing host to an infamous scene in [T2: Trainspotting](#), is often used in outdoor **Outlander** scenes, including when the characters settle in America.

[Muiravonside Country Park](#) was used for battle scenes in both **Outlander** (Battle of Prestonpans) and **Outlaw King**. Falkirk's [Callendar House](#) played host to one of **Outlander's** grislier scenes: the Duke of Sandringham losing his head! More peacefully, the charm and heritage of the [Union Canal](#) regularly feature in current-affairs TV documentaries and travelogues.

"[FilmOnForth.co.uk](#)" is a great resource for exploring film locations in the area, while Linlithgow's own [Mary's Meanders](#) (07818 687066) offer a wide variety of historical and Outlander tours. [Lilypond Crafts & Gifts](#) is Linlithgow's official Outlander merchandise outlet.

EVENTS

There's never a dull moment in Linlithgow! Even if these events aren't happening while you're here, you can always [check what's on at mylinlithgow.com](https://mylinlithgow.com). There's live music, sports, activities and much more, all year round.

Please note that some events may be cancelled or rescheduled due to the coronavirus pandemic. If you're planning your trip around any of these events, please check with the organiser before booking travel/accommodation.

Party at the Palace

CANCELLED 2021 (DUE TO COVID) / August 2022

The acts don't come much bigger than at Party at the Palace: previous years have seen acts like Chic, The Charlatans and KT Tunstall grace the stage. Purchase tickets in advance to avoid disappointment. It's family-friendly and, if you're coming from further afield, why not make a long weekend of visiting the town? Details of where to stay are in this guide! partyatthepalace.co.uk



Party at the Palace

Classic Car Day

Sunday 29 August 2021 (TBC), The Vennel and The Cross

From Austin Healeys to Aston Martins, Minis to Maxis; Linlithgow Classic Car Day has something for all petrol-heads! The Classic Car society meets on the last Sunday of every month at the Cross, but if you really want to see the full range of classic cars, the annual Classic Car Day is the one not to miss!



An Austin Six at Linlithgow Classic Car Day

Folk Festival

Wednesday 8 - Sunday 12 September 2021 (TBC)

Linlithgow enjoys classical and contemporary live performances all year round, from intimate gigs in small venues to large-scale concerts in the larger venues and sports clubs. Folk music, though, requires an intimate setting to get the blood flowing, so these fantastic gigs take place in the town's pubs throughout the week. A must for residents and visitors alike. linlithgowfolk.com

Doors Open Days

Saturday 11 - Sunday 12 September 2021

Doors Open Days is Scotland's largest free cultural festival and, celebrating the built environment and giving free access to around 1,000 venues across the country throughout September, every year. Coordinated by the Scottish Civic Trust with support from Historic Environment Scotland. Linlithgow Civic Trust coordinates Doors Open Days in West Lothian. Each year a varied programme of venues and other events is pulled together in and around Linlithgow.

Fireworks Night

Early November 2021 (TBC), Linlithgow Rugby Club

Wonderful community fireworks display, with all proceeds reinvested in youth and community sports. The clubhouse and bar are open, with food and drink available. Display usually begins at 7:30pm.

Christmas Shopping Day

Thursday 25 November 2021 / Thursday 24 November 2022

Building a strong reputation for festive cheer and taking the stress out of Christmas shopping, Christmas Shopping Day evolved from a "late-opening" evening to a full day of merriment, mulled wine, mince pies and music. Shops are open until 8pm, with many staying open beyond to cope with demand.

Advent Fayre

Saturday 27 November 2021 / Saturday 26 November 2022

The jewel in the crown of Linlithgow's festive calendar. A full day of parades, processions and music signals the truly magical torchlight procession along the High Street and the switch-on of the Christmas lights. The lights are expanded every year, so each switch-on is more spectacular than the last! There's no escaping that festive feeling on Advent Fayre day!

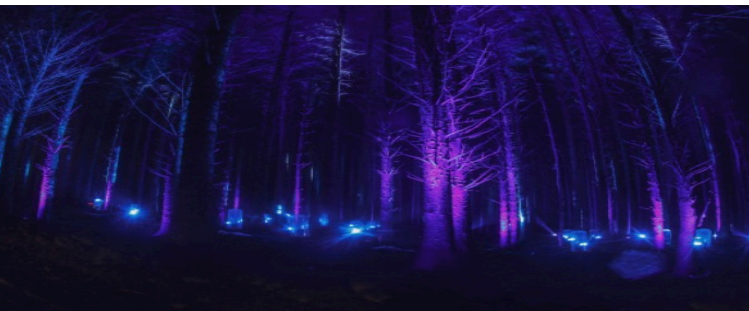


The magical Torchlight Procession at the Advent Fayre

Beecraigs Festive Forest

Friday 3 - Friday 24 December 2021 / TBC 2022

Back for 2021, [Beecraigs Festive Forest](#) is even bigger, brighter, longer and more spectacular! With one of the UK's most powerful laser shows and stunning lighting effects, this atmospheric and magical event is a perfect family experience! Set deep within the woods of Beecraigs Country Park, there are panoramic views over the Forth bridges, Edinburgh, the Lothians, and Fife.



Perambulation of Linlithgow's Marches

Wednesday 8 June 2022

On the Wednesday evening before Marches Day, Linlithgow's townsfolk come out in force to celebrate the Perambulation of the Marches: a four-mile circuit round Linlithgow's 1832 Parliamentary boundary. It's headed by the Provost of Deacons' Court, flagbearers, halberdiers and the town piper, who plays at each of the march stones on the way. Starting outside St. Ninian's Church at West Port, there are many points of interest along the way. A free leaflet is available from venues throughout the town, but the walk can be enjoyed at any time.

Marches Day

Tuesday 14 June 2022

For over 400 years, Marches Day has been the most important date in the Linlithgow calendar. Residents delight in being awoken by flutes and drums at 5am, signalling a day of merriment for all! After a morning's fraternisation and refreshment, the hubbub around the Palace and Cross begins to brew. At 11am sharp, the Burgh Halls bell initiates the spectacular parade (recreated more raucously at 5pm). By this time, the whole town and its visitors are out in force. For the rest of the day, they'll revel in the town's cafés, restaurants and pubs, in a union of a proud community not often seen in the modern day!



Marches Day: image courtesy andywestpix.co.uk

Children's Gala Day

Saturday 18 June 2022

Since 1930, Children's Gala Day has been held on the Saturday after Marches Day. The enormous procession weaves from Linlithgow Bridge down to the Peel, in the historic grounds of [Linlithgow Palace](#). Every local school and community group gets involved, parading on their magnificent floats, before the Gala Queen is crowned at the Peel, where a wide variety of children's entertainment and stalls create a party atmosphere for all ages.



Children's Gala Day

Civic Festival

Week of Marches Day 2022, Linlithgow Rugby Club

Hosts a variety of exciting events from Marches day right through to the following weekend, concerts, readings, community group events, dinners and dances. Events are always being added right up to the event, so check the "Linlithgow Civic Festival" Facebook page for details.

Spectacular Jousting

June 2022 (TBC, see website), The Peel

The extreme sport of medieval days; who will triumph in this brutal battle of fearless knights and their trusty steeds? If thundering hooves and the thrill of impalement are your cup of tea, you can pick up tickets on the day (or, if you're a member of Historic Environment Scotland, no ticket required). Perhaps surprisingly, this event is suitable for the whole family!



Jousting at The Peel

Canal Fun Day

Sunday 14 August 2022, Linlithgow Canal Centre

Another favourite date in the Linlithgow calendar, which might just raise more smiles than any other. From ducks to cardboard boats, it all gets raced, and you can guarantee somebody's going to get wet! Stalls, shows, face-painting, music, you name it... if it's fun, it's there! lucs.org.uk/funday



Canal Fun Day at Linlithgow Canal Centre

Scotch Hop

Wednesdays 13 July - 10 August 2022, Linlithgow Palace

You can't get much closer to our cultural history than dancing to traditional Scottish music right in the very spot where Mary, Queen of Scots was born. You don't need to know the dances, just bring your sense of fun! Tickets available on the door (starts at 7:30pm).



Scotch Hop at Linlithgow Palace

What's on while you're visiting? [CLICK HERE!](#)

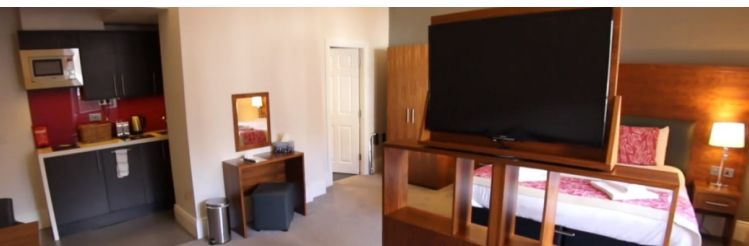
WHERE TO STAY, EAT, DRINK AND ENJOY

Well-served by both affordable and luxury accommodation, Linlithgow is a perfect base for exploring the wider area. First things first: you'll need a bite to eat and a bed!

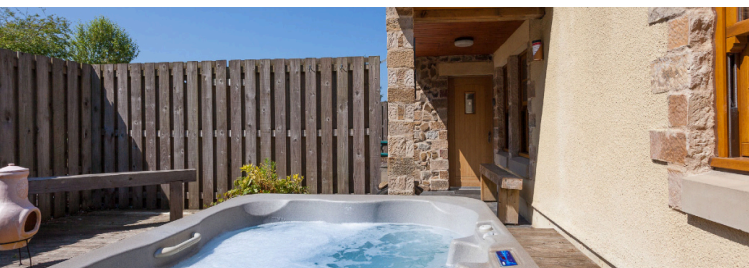
S/C = Self-catering, CP = Caravan park

Where to Stay in Linlithgow

<u>Carribber Cottages (S/C)</u>	1 Carribber Reservoir	01506 847269
<u>Court Residence (Aparthotel)</u>	1 Court Square (High Street)	01506 538687
<u>Garden Cottage (S/C)</u>	293a High Street	01506 844417
<u>Palace View B&B</u>	257 High Street	01506 844010
<u>Star & Garter Hotel</u>	1 High Street	01506 845647
<u>Strawberry Bank B&B</u>	13 Avon Place	01506 848372
<u>West Port Hotel</u>	18-20 West Port	01506 847456
<u>Williamsraig Holiday Cottages</u>	Williamsraig	07795 040608



The Court Residence



Williamsraig Holiday Cottages

Where to Stay in the Wider Area

<u>Aran House B&B</u>	Lanark Road	01506 842088
<u>Arden Country House B&B</u>	Belsyde	01506 670172
<u>Beecraigs Country Park (CP)</u>	via Preston Road	01506 284516
<u>Bellevue Holiday Lets (S/C)</u>	Edinburgh Road	07793 227374
<u>Bridge Inn</u>	Linlithgow Bridge	01506 842777
<u>Champany Inn</u>	Near M9 junction	01506 834532
<u>Loch House Farm (CP)</u>	St. Ninian's Road	01506 848283
<u>Lumsdaine House B&B</u>	Lanark Road	01506 845001
<u>Parkley Cottages (S/C)</u>	Off Manse Road	01506 842027
<u>Queen's View B&B</u>	3b Parkhead Holdings	01506 844420

Where to Eat and Drink in Linlithgow

Whether you're after a quick bite on the go, an evening of fine dining, or a few of the finest beers and whiskies Scotland has to offer, you're never far from an award-winning restaurant, café, pub or bar in Linlithgow.

Aran Café	1 The Cross	01506 844477
Ashmaan Restaurant	25a Mill Road	01506 845097
Bamboo Inn	137 High Street	01506 848888
Bar Leo Restaurant	50 High Street	01506 846667
Black Bitch Tavern	14 West Port	01506 842147
Bridge Inn	Linlithgow Bridge	01506 842777
Cabrelli's Takeaway	245 High Street	01506 842462
Cafébar 1807	108-110 High Street	01506 847586



Cafébar 1807

Champany Inn	Near M9 junction	01506 834532
Coffee Neuk	11 The Cross	01506 846097
Costa Coffee	68 High Street	01506 840115
Cosy Tea Room	163 High Street	07392 395690
Crannog Café	54 High Street	01506 843982
Crown Arms	177 High Street	01506 844434
Delhi's Winter Restaurant	Unit 12 Regent Centre	01506 671611
Domino's Pizza	53 Falkirk Road	01506 670700
Du Vin Bouchers Bar	62 High Street	01506 848048



Cheese and wine tasting at Du Vin Bouchers

Fenwick's of Linlithgow	145 High Street	01506 238580
Footballers & Cricketers Arms	111 High Street	01506 843590
Four Marys Bar	65-67 High Street	01506 842171
Golden Chip Takeaway	147-149 High Street	01506 844523
Granary Café	102 High Street	01506 253408
Gregg's the Baker	Unit 22 Regent Centre	01506 671579

[Hideaway Café](#)
[Kingsfield Golf & Leisure](#)
[Linlithgow Golf Club](#)

Beecraigs Country Park 01506 847111
 Kingsfield Farm House 01506 671607
 Golf Course Road 01506 842585



Kingsfield Leisure and Linlithgow Golf Club golf courses

Lochside Café	276a High Street	01506 848599
Mannerston's Café & Shop	Off A904	01506 834949
Mason Belle's Kitchen	52 High Street	01506 843867
Nero Pizzeria	Unit 20 Regent Centre	01506 237558
Old Post Office Bar	29-31 High Street	01786 464446
Oliphant's Bakers	216 High Street	01324 619610
Park Bistro	Park Farm	01506 846666
Platform 3 Pub	3 High Street	01506 847405
Rosey Posey Pub	271 High Street	01506 843313
So Strawberry Caffé	3 The Cross	01506 843333
Star & Garter Hotel	1 High Street	01506 845647
Subway	117 High Street	01506 671852
Swan Tavern	248 High Street	01506 845008
Sweet Little Cheesecake Café	230 High Street	07475 793239
Taste Café Deli	47 High Street	01506 844445
Tee Caddy Café	Kingsfield Farm House	01506 671607
Well Bread Bakery	234 High Street	01506 847007
West Lothian Golf Club	Airngarth Hill	01506 825060
West Port Express Takeaway	8 West Port	01506 842156
West Port Hotel	18-20 West Port	01506 847456
White Dove Coffee Roasters	Unit 8 Regent Centre	01506 238898
Zio G's Takeaway	8a West Port	01506 848072



The Star & Garter Hotel

Activities

Fishing, golf, swimming, soft-play, pottery, canal boat rides... or just a walk in the country park on a sunny day.

MR = Mill Road Industrial Estate (Linlithgow Bridge)

Beecraigs Country Park	via Preston Road	01506 284516
Bowden Springs Fishery	1 Carribber Reservoir	01506 847269
Kingsfield Golf & Leisure	Kingsfield Farm House	01506 671607
Linlithgow Canal Centre	1b Manse Road	01506 671215
Linlithgow Golf Club	Golf Course Road	01506 842585
Linlithgow Palace	1 Kirkgate	01506 842896
Linlithgow Pottery	APPOINTMENT ONLY	07557 784020
Parkley Fishery	Off Manse Road	01506 842027
PlayBugs Soft Play	MR: Unit 24 E-Net Park	01506 238488
West Lothian Golf Club	Airgarth Hill	01506 825060
Xcite Linlithgow	McGinley Way	01506 237960



Linlithgow Pottery's wheel



Fun at PlayBugs

Vehicle Hire

Bike & Go (Cycle Hire)	Railway Station	
Bruce's Taxis		01506 828888
Express Taxis		01506 824244
Five Star Taxis		01506 847777
Gordon's Taxi		01506 264242
Linlithgow Taxis		01506 260123
Mike's Taxis		01506 848486

Useful Numbers

Emergency Services (all)	999
Police Scotland (non-emergency)	101
NHS 24 (non-emergency)	111
Crimestoppers	0800 555 111
Royal Infirmary of Edinburgh	0131 536 1000
St. John's Hospital Livingston	01506 523000
Edinburgh Airport	08444 488833
Glasgow Airport	08444 815555
National Rail Enquiries	03457 484950
West Lothian Council	01506 280000

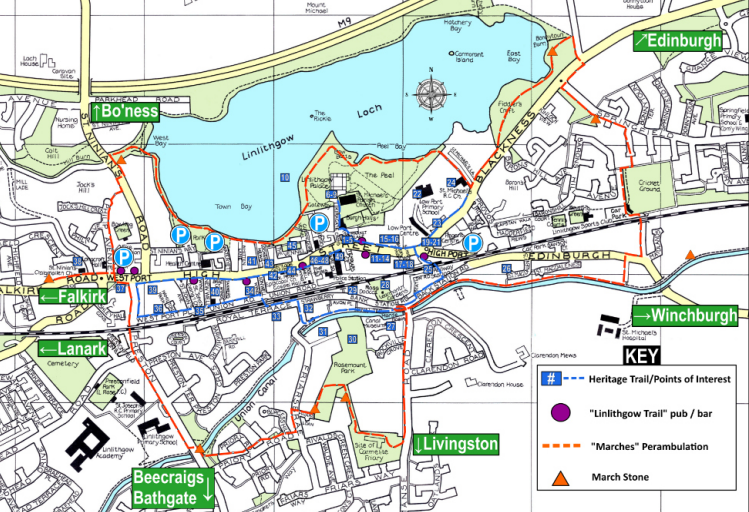
Further Information

Linlithgow is lucky to have a wide variety of community groups, all helping to promote the town, organise events, welcome visitors and much more.

If you're planning a visit to Linlithgow, you can speak to a real person, who will do their best to assist you in making sure your trip goes smoothly. At first instance, you can visit onelinlithgow.com and use the [contact form](#) to ask a question or request information. Alternatively, you can email hello@mylinlithgow.com. Both teams would be very glad to help!

From 2022, [Linlithgow's Community Council](#) will be operating a physical Visitor Information Centre from the [Burgh Halls](#), right in the centre of town, next to [Linlithgow Palace](#). Until then, staff at the [Court Residence](#) aparthotel are more than happy to help, and to supply leaflets relevant to you.

Linlithgow's official website is mylinlithgow.com. It's updated regularly with events, as well as community and business information, facilities, travel information, useful links, and even webcams, so even after your visit is over, you can keep tabs on what's going on in town.



If the map on this page is too small to see properly on your device, just [click or tap here](#) for a full-size image (7.7MB), which you can save and view/zoom however you prefer.

If you're following a walking trail, it's an easy way to follow the landmarks, without having to have the full guide open and on the correct page! Alternatively, you can pick up a hard copy of this guide from lots of places all over town, including:

[Burgh Halls \(The Cross\)](#)

[Court Residence \(Court Square, High Street\)](#)

[Linlithgow Palace \(see "Attractions"\)](#)

[Linlithgow Town Centre Hub \(28 The Vennel\)](#)

[Linlithgow Partnership Centre \(93 High Street\)](#)

[Lilypond Crafts & Gifts \(25 High Street\)](#)



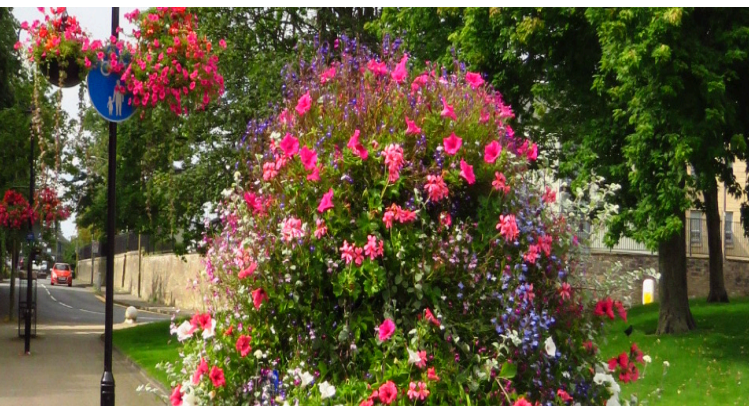
Visitor information at the Burgh Halls, The Cross

Walking Trails

There are several excellent walking trails in Linlithgow, which will introduce you to the town and many of its interesting places. None of them are particularly long or strenuous, and you can now even learn about Linlithgow on-the-go with [Visit West Lothian's fantastic audio trails](#).

Whether you're looking for heritage, history, floral installations, or a few refreshments, there's a trail for you:

Heritage Trail	21-28
Audio Trails	29
Floral Trails	29
Linlithgow (Ale) Trail	30
Perambulation of Linlithgow's Marches	31
Battle of Linlithgow Bridge Trail	31-32



One of Linlithgow's many floral displays



WALKING TRAILS

Linlithgow Heritage Trail

For those interested in the history and architecture of the Royal Burgh of Linlithgow, we have devised the Heritage Trail, which will take you round the main features and buildings in the town centre. The route is shown on the centrefold town map.

It starts at The Cross in the very centre of the town and can be split in to easy sections, if desired. Most locations are indicated by a circular plaque, shown below; an interpretation of Linlithgow's "St. Michael" coat of arms by artist Tim Chalk. The trail should be followed in numerical order. There are information panels giving more details at various points along the route.

1: The Cross. One of the finest civic spaces in Scotland and the focal point for the Marches celebrations. The Cross Well is a replica of a 1535 well and was made in 1807 by a one-handed stonemason. It was refurbished in 2016.

2: Carved Pediment. Looking west up the slope, you will see an old stone, dated 1675, set into the end of the building on the left. This came from the Golden Cross Tavern which once stood nearby.

3: Cross House. The older white building at the north-west corner of The Cross dates from 1700. It contains a fine mid-18th-century plaster ceiling and now forms a suite of church meeting rooms.

4: Town House or Burgh Halls. To the right, the imposing structure with clock-tower and fore-stairs was once Linlithgow's municipal building. Replacing an earlier Tolbooth demolished in 1650 by Oliver Cromwell, it was built in 1668-70 by John Smith, based on designs by John Mylne, Master Mason to Charles I and Charles II. Conversion into a high-quality community arts facility was completed in 2011.

Proceed up the narrow street, the Kirkgate, between Cross House and the Burgh Halls. On the right, go through the archway under the back of the Burgh Halls, and, ahead you will see...

5: The "Green Man". A 1911 bronze statue of John Hope, Australia's first Governor General. He became the first Marquess of Linlithgow in 1902.

Continue up the Kirkgate towards the Palace Gatehouse - note the plaques recording the royal line of succession.

6: Palace Gatehouse. Dating from circa 1535, the gateway features four carved and painted panels representing the orders of knighthood borne by James V – the Golden Fleece, St Michael, the Garter and the Thistle.

7: St Michael's Parish Church. Just inside the gate on the right is one of Britain's finest parish churches. After consecration in 1242, it suffered a fire in 1424 and was rebuilt shortly afterwards in much its present form. In 1821, the tower lost its 15th-century stone crown – replaced in 1964 by today's striking aluminium spire. Notable interior features include the pulpit, stained glass and the burgh war memorial. See "attractions" section.



St. Michael's in the snow

8: Linlithgow Palace. A royal manor house was first established here in the 12th century. The present square building was started in 1424 for King James I. James V was born here in 1512, and Mary, Queen of Scots in 1542. The Scottish Parliament met in the Great Hall, most recently in 1646. The Palace was fortified and occupied during 1650–59 by Oliver Cromwell, was gutted by fire in 1746 after occupation by the Duke of Cumberland's soldiers, and has remained roofless ever since. See "main attractions".

9: The Peel. The open parkland around the palace, known as The Peel, is one of only two Royal Parks in Scotland, the other being Holyrood Park in Edinburgh. The slope down to the loch on the left of the Palace was once occupied by orchards and beehives, while elsewhere archery was practised. A new statue of Mary, Queen of Scots by David Annand was unveiled in 2015, and stands near to the Palace.



Statue of Mary, Queen of Scots at Linlithgow Palace

Pass the left side of the Palace to view Linlithgow Loch.

10: [Linlithgow Loch](#). Sitting in the pre-glacial valley of the River Avon, it has been used for curling and bleaching. Today it caters for fishing, sailing and birdwatching. Across the loch is Airngath Hill, featuring Grange (a 1909 mansion) and a monument to Adrian Hope, killed in the Indian Mutiny.

Return to The Cross. Turn left to see the buildings across the High Street.

11: Fire Mark/Plaque. Between the first and second storey windows of 79 High Street is an early-1800s “fire mark”, which indicated that the building was insured by the Sun Fire Office.

12: [Four Marys](#) and Waldie Tablet. Heading east, above the Four Marys pub across the High Street, is a plaque commemorating Dr. David Waldie, a pioneer with James Young Simpson in medical use of chloroform.

13: Cornwall Coat of Arms. Above the back of the pend between 59-61 High Street, is an inscribed stone from an earlier building, featuring the Cornwall coat of arms, with the date 1527.

14: Bank Building. Yet further along, the turreted building was constructed in 1859 for the Commercial Bank of Scotland. It features very fine ornamental railings in front and was a branch of the Royal Bank of Scotland until it closed in 2018.

15: Hamilton’s Land. Further along on the left, these rubble-built 16th-century buildings, with their crow-stepped gables, are a picturesque survival of old Linlithgow that was restored by The National Trust in 1958.

16: [Old Post Office](#). On the right, the town’s former Post Office of 1903, in Scots Renaissance style, was converted into a pub in 2009.

17: St Michael’s Well. Also across the High Street is the wellhead of St Michael’s Well, with an inscribed stone dated 1720, a winged St. Michael, and the town’s ‘Black Bitch’ coat-of-arms. Restored in 2010.



High Street, with St. Michael’s Well and Hamilton’s Land

18: St Michael's Hotel and The Mint. The late 19th century tenement behind the well, once a hotel, replaced a superb medieval town house popularly known as "The Mint".

19: Star & Garter Hotel. Prominent in black and white at the end of the High Street, it was built in 1760 as a residence. For many years, the hotel was the base for the Linlithgow and Stirlingshire Hunt. Gutted by fire in 2010, it has since been restored.

20: High and Low Ports. Marked on the roadway across the roundabout are the outlines of Linlithgow's eastern town gates.

21: Regent Centre and Regent Works. The modern buildings facing the roundabout replaced the Regent Works of 1902, an Italianate factory once operated by Nobel Explosives.

22: Low Port Primary School. Beyond the junction on the left is the former Linlithgow Academy building, now Low Port Primary School. Round towers above the entrances are prominent features of this 1902 building.

23: St. Michael Sculpture. In the centre of the gardens at the front of the school entrance, 2020 saw the installation of a statue of St. Michael by sculptor Alan Herriot. This portrays one of Linlithgow's two town insignia, the other being the 'Black Bitch', a sculpture of which will be seen later in the Heritage Trail.

An optional diversion is to continue further ahead to see...

24: St Michael's RC Church. Gothic revival buildings, dating from 1887 and designed by renowned church architects, Pugin and Pugin.

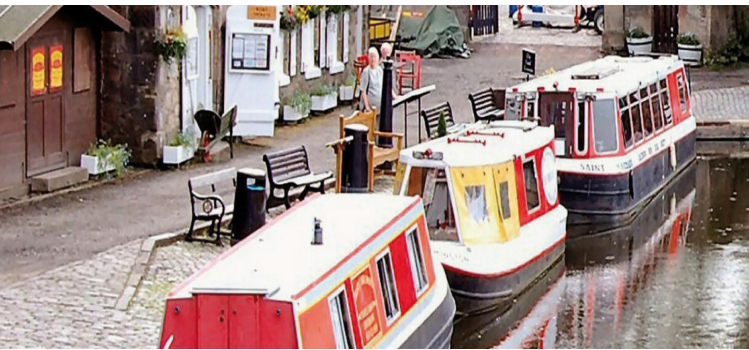
Cross to the Star & Garter Hotel, proceed first left up to the station. Enter the station and continue through the subway to the south platform.

25: Linlithgow Railway Station. Dating from 1842, this is one of the best-preserved original stations of the Edinburgh and Glasgow Railway, which was electrified in 2017. The eastbound waiting room features a large mural of the town's annual Marches procession by Mary-Louise Coulouris.

26: St Magdalene's Distillery. From the far (east) end of the platform, you can see the distillery buildings where production of single malt whisky ran from 1753 until 1983, now converted into flats.

Leave the platform and exit through the car park to Back Station Road. Turn right and continue up the hill to the canal bridge...

27: Union Canal. Here is the Linlithgow basin of the Union Canal, opened in May 1822. Here you'll find a [range of Boat Trips](#) — some to the Falkirk Wheel — a self-drive canal boat, electric dinghies, and crewed charters for special occasions, as well as Scotland's only Canal Museum, a Tea Room. Open Sat/Sun afternoons Easter to end September, and weekdays July and most of August.



Linlithgow Canal Centre

28: [Ross Doocot](#) and [Dudley](#). On the opposite side of the canal basin are the Learmonth Gardens and 16th century Ross Doocot, containing 370 nest boxes. Next to the canal basin is “Dudley”, a bronze cat sculpture by David Annand mounted on a granite plinth – Linlithgow’s feline version of Greyfriars Bobby in Edinburgh, unveiled in 2018.



Dudley the Cat

29: Town Wall. The high wall on the right-hand side of Strawberry Bank going down the hill is part of the 17th century town wall.

From the Canal Basin, take the canal towpath westwards.



John Slezer’s 1961 drawing shows the Town Wall clearly

30: Rosemount Park and Friars’ Well. Across the canal is Rosemount Park, one of Linlithgow’s hidden gems. It contains the fountainhead of the Cross Well, which had previously served the Carmelite Friary located further up the hill.

31: Mrs Douglas’ Cottage School. The stone cottage on the opposite bank, dating from 1826, once accommodated a girls-only school with fees of two pence per week.



Just before the bridge over the canal, turn right downhill.

Mrs. Douglas’ Cottage School

32: Former Ebenezer Chapel. The gable-end plaque of the cottage on the right recalls its use as an Evangelical Union meeting house from 1852.

Turn left on to Royal Terrace.

33: Royal Terrace. An attractive composition of 19th-century stone houses. Note in particular No. 6 with its central ox-eye window.

Cross the railway by the footbridge.

34: Lion Well Wynd. There is an excellent view over the high wall down Lion Well Wynd, Linlithgow's steepest, opened circa 1750.



Lion Well Wynd

Turn left on to Union Road

35: St John's Evangelical Church. The church on the right was completed in 1840 as a congregational chapel, costing around £750.

36: Prefabs. Facing the railway embankment further along are the prefabs of Hamilton Park, temporary houses built after World War II and later cunningly disguised as bungalows by the Town Council!

Turn right at Preston Road and walk to the High Street. Look to the left before turning right again towards the starting point.

37: West Port. The Royal Burgh's western gateway was removed around 1800. Hostelries were established here for travellers shut out for the night. Note Katie Wearie's Tree (the big willow), the bronze Katie Wearie sundial sculpture created by Tim Chalk in 2011 and the vernacular-inspired 1937 tenement on the corner of the High Street.

38: St Ninian's Craigmailen Parish Church. In the background, westwards on Falkirk Road, is its elegant broach spire, dating from 1874.



Katie Wearie sculpture at West Port, by Tim Chalk

Return to *The Cross* along the south side of the High Street.

39: West Port House. Ahead on the right, you will see West Port House above a retaining wall created when the road was lowered two centuries ago. A laird's house dating from 1600, it was built by the Hamilton family.

40: New Well. Further along, at a street corner, the stone structure on the pavement is the New Well, an 18th-century example of the wellheads that once graced the High Street.

41: Former Baird Hall. A lower, set-back building on the left, dating from 1863, has variously served as a Catholic church, a Catholic school, and as the church hall for St Michael's Parish Church.

42: St Peter's Episcopal Church.

Designed by Dick, Peddie and Todd in Byzantine style, this architectural gem of 1928 is set back behind the tenement facades on the right.

43: "Black Bitch" Sculpture. Opposite the church is the second 'civic insignia' sculpture on the Heritage Trail. This representation in bronze of Linlithgow's traditional 'Black Bitch' was sculpted by David Annand and unveiled in January 2020.

44: Annet House. On the right is a three-storey 18th century merchant's house, now being converted back into a private residence. Until 2017, it housed Linlithgow's town museum (now item 49).

45: The Vennel. The controversial 1967 redevelopment on the left (designed by Rowand Anderson Kininmonth and Paul) was one of the worst losses of historic townscape in Scotland.



*St. Peter's
Episcopal Church*



Linlithgow's "Black Bitch" sculpture at the Vennel

46: Shoemakers' Land. Opposite the Vennel flats is Shoemakers' Land, bearing an armorial plaque reflecting former ownership by the Shoemakers' Guild and a vanished local industry. In Scotland, Linlithgow's leather industry was once second only to that of Perth.

47: Dog Well Wynd. Named after the former Dog Well, which was supplied from the now-culverted Cross Burn. Up the wynd on the right, the scout hall was once McAlpine's shoe factory and the "Spires" houses further up occupy the site of the Linlithgow West United Presbyterian Church.

48: Court Residence. Further along is the former Sheriff Courthouse of 1863, built in Tudor style and recently converted to visitor accommodation. On its front is a bronze relief commemorating the assassination of Regent Moray in the vicinity in 1570, the world's first recorded assassination of a head of state by firearm.



Earl of Moray plaque

49: Linlithgow Partnership Centre/Tam Dalyell House.

This impressive neo-Georgian building, formerly the West Lothian County Buildings, was opened in 1939. See "main attractions: Linlithgow Museum". Note the former Linlithgow provost's lamp at the front.

This completes the Trail and returns you to the starting point at The Cross.

Audio Trails

To help explore the sights and history of the town, a series of podcasts and interactive audio trails are now available on the [Visit West Lothian website](#).

These three podcasts cover History & Heritage, Linlithgow's Film & TV fame, as well as a look at the attractions and food and drink available in the town.

In addition to these, a "virtual tour guide" helps you navigate the town. To start, navigate to the dedicated section on the website, pick a trail you're interested in and press Start. You'll receive directions to each attraction, and once you've arrived simply press play where you'll hear a range of information covering the history as well as some fun facts. A transcript of the content on the site is also available for each section too if you would prefer.

Linlithgow Itineraries

Not yet live at time of going to press, but will include audio trails explaining the history and heritage of Linlithgow. If you have GPS location enabled on your device, the site will show you the trail closest to you.

Things To Do in Linlithgow

Showcases many of the attractions in this guide, with links and further information.

Floral Trails

Linlithgow won the "town" category in the 2018 Britain In Bloom UK Finals. The Floral Trails booklet, published separately by [Burgh Beautiful Linlithgow](#), describes walking and driving routes to view the best of the town's floral displays. One is a numbered walking route around the town centre. The other two are lettered routes suitable for driving or walking, which show the main floral features elsewhere in the town. The town's public floral displays are entirely the work of Burgh Beautiful's volunteers and partners, and are financed by the town's residents, groups, organisations and businesses.



Learmonth Gardens

Linlithgow Trail/“Ale Trail”

Scotland is famous for its pubs (an abbreviation for “public houses”) and Linlithgow has many fine hostelryes. Why not take the “Linlithgow Ale Trail” and explore some of Linlithgow’s pubs? A refreshing way to see the Royal Burgh!

The Trail is based on the local Pubwatch and consists of eight pubs. Their aim is “to promote a safe drinking experience, while you also enjoy everything the High Street has to offer”. Since the Trail started in December 2014 - until lockdown in March 2020 – almost 20,000 T-shirts have been earned (including almost 7,000 in the last operational year!). When you complete the Trail, the coveted T-shirt is yours!

The Trail starts/ends at West Port/Platform 3 and the cost of a card is £5.



Relax and enjoy the friendly atmosphere in Linlithgow’s pubs

Perambulation of Linlithgow's Marches

4mi/6.5km

The Perambulation takes you around what was Linlithgow's 1832 Parliamentary boundary. The route is open to walk any time and is shown on the town map (pages 19-20). See "events" for details of the annual event.



One of the "March Stones"

The walk passes by seven of eight march stones (one original and seven replicas, which were installed in 2014) marking the boundary. Its route passes some 32 features of historical or architectural interest, mostly different from those on the Heritage Trail, and is shown on the map in the centre pages. Full details are given in a separate leaflet, available free from the [Burgh Halls](#) and [Partnership Centre](#) (both at The Cross).

The Perambulation starts in front of [St Ninian's Church](#) on Falkirk Road and proceeds clockwise along the route. This direction of travel is strongly recommended for safety reasons; visibility at road crossings and steep steps. Keep an eye out for the march stones along the route, which are inscribed 'LPB' (Linlithgow Parliamentary Burgh).

Battle of Linlithgow Bridge Trail

This trail takes you round the site of the Battle of Linlithgow Bridge, which was a product of the power vacuum in Scotland created by the death of James IV at Flodden in 1513.

On 4 September 1526, land to the south of Linlithgow Bridge (on the town's western fringes) was the site of a battle which took place when the Earl of Lennox and his army of 10,000 men, on their way to Edinburgh to free the young King James V from his Regent, the Earl of Angus, was confronted at the river crossing, initially by a force of 2,000 men loyal to Angus.

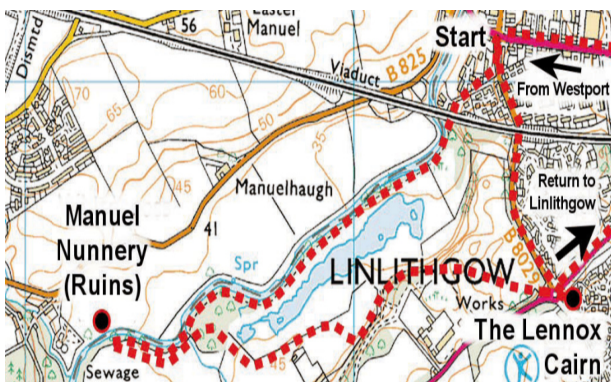
Despite the numerical superiority of his own forces, Lennox was forced to surrender once reinforcements supporting Angus arrived from Edinburgh. His subsequent murder is commemorated by the Lennox Cairn. For further information, please visit bolb.org.uk.



The Lennox Cairn

Walking the Battle of Linlithgow Bridge Trail: The trail starts at the information panel at the Linlithgow Bridge crossroads, one of three on the route. Paths can get muddy. From the starting point, walk south along Mill Road for 100 yards, then turn right into Burgh Mills Lane to join the River Avon Heritage Trail. Follow the trail until you reach a small wooden bridge. Just past the bridge, look across the river where you may see the ruins of the Manuel Priory amid the trees.

Return to the bridge and turn right, away from the river. When you reach open ground, bear left and uphill. On your left is a pond and you should find a path leading to a clearing where the path turns right and climbs steeply. Turn left at a broader path and you will reach open ground. The path on your right leads to a gate where you will see, across a roundabout, the Lennox Cairn, which marks the approximate site of the murder of the Earl of Lennox after the battle. Return to Linlithgow Bridge, northwards via Mill Road.



The Battle of Linlithgow Bridge Trail

SHOPPING AND SERVICES

Linlithgow has one of the finest retail and service offerings of any town in Scotland. It's certainly worth leaving a day of your visit free to explore!

MR = Mill Road (Industrial Estate at Linlithgow Bridge)

BBU = Braehead Business Units (off Braehead Road)

S'bridge Retail Park = Stockbridge Retail Park, off Falkirk Road

Shops

[2 Feet 1st](#)

73 High Street

01506 847576

[A Wee Mindin'](#)

48 High Street

01506 848313



[Aldi](#)

53 Falkirk Road

08000 420800

[Argos](#)

32 Falkirk Road

03451 657893

[B&M](#)

Unit 1 S'bridge Retail Park

03308 389337

[Barnardo's](#)

51 Falkirk Road

01506 846442

[Boots the Chemist](#)

70-72 High Street

01506 846371

[Bright Star Toys](#)

175 High Street

01506 846326



[British Red Cross](#)

217 High Street

01506 671658

[Cancer Research UK](#)

107-109 High Street

01506 848552

[Centre Stage Dancewear](#)

86 High Street

01506 209916

[Chest, Heart and Stroke Shop](#)

220 High Street

01506 846020

[Complete Health](#)

159 High Street

01506 847270



Debra	Unit 10 Regent Centre	01506 340314
EasyGo Electric Bikes	MR: Unit 9 14 Mill Place	01506 237162
Elevation Cycles	103 High Street	01506 845390
Fair Tradewinds	131-133 High Street	01506 840348
Far From The Madding Crowd	20 High Street	01506 845509



Flowers By Carolyn	171 High Street	01506 847724
Fone Unlocker	276b High Street	01506 847444
Il Fruttivendolo	211 High Street	01506 238618
J. Walker Carpets & Gifts	2 The Vennel	01506 670777
Jewellery By Design	121 High Street	01506 239292
Kapital Kilts	114 High Street	01506 843658



Küchenhaus	33 High Street	01506 845400
Lilypond Crafts & Gifts	25 High Street	01506 840225
The Line Gallery	238 High Street	01506 670268
Linlithgow Distillery	MR: Unit 15 E-Net Park	01506 846873



Linlithgow DIY	167 High Street	01506 670924
Linlithgow Stoves & Gifts	228 High Street	01506 871358
Little Beau Peep	71 High Street	01506 888886
Low Port Music	18a High Street	07772 811338
Mac's of Linlithgow	73 The Vennel	01506 845159



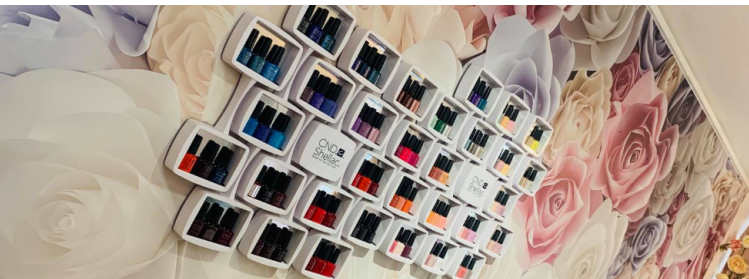
McColl's	258 High Street	01506 671176
mid-C-mod	78 High Street	01506 848560
Oxfam	98 High Street	01506 671217
Pets At Home	Unit 3 S'bridge Retail Park	03458 508868
Purely Patchwork	43 High Street	01506 846200
Qworth Fashion	205-207 High Street	07914 845017
Rainbow Railways	MR: Unit 24 E-Net Park	01506 238488
Sainsbury's	32 Falkirk Road	01506 845775
Spar	2-4 Springfield Court	01506 848554
TD Anderson Butcher	165 High Street	01506 842140



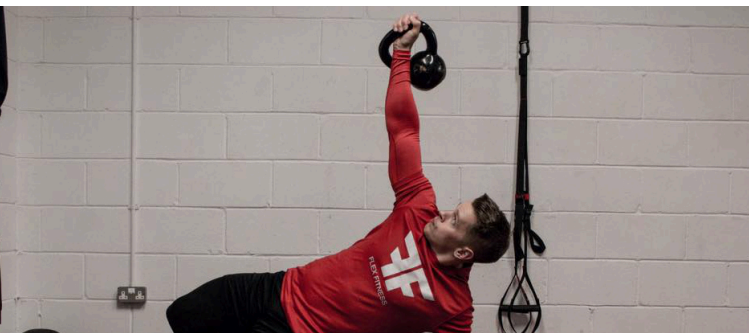
Tesco	Unit 2 Regent Centre	03456 779432
Thread Counter	75 The Vennel	01506 842013
Tracey Victoria Interiors	9 High Street	01506 894882
VPZ	56 High Street	01506 847850
West End Gallery	12 The Cross	01324 613100
Wilson's Newsagent	1 The Vennel	01506 843213

Services

AJM Hairdressing	213 High Street	01506 371143
Andy's Bike Clinic	226c High Street	07765 407663
Angel Nails & Spa	212 High Street	01506 340075
Autobits	185 High Street	01506 671200
Bank of Scotland	Units 24-26 Regent Centre	03457 801801
Barber	30 High Street	01506 840333
Beautique Beauty Salon	222 High Street	01506 844002



Bella Bridal Boutique	7 High Street	01506 237482
Bonnie Weddings and Events	34 High Street	07947 716537
Boxx Hairdressing	222a High Street	01506 847581
BP Petrol Station	30 Falkirk Road	01506 840390
Chakir Hairdressing	254 High Street	01506 671800
Cross Barbers	15 The Cross	07411 007531
Debbie Stevenson Hair Design	2 The Cross	01506 844800
Detail Hair	13 High Street	01506 670429
Devine Dental	24 High Street	01506 842011
Dogstar Grooming	BBU: Unit 4	01506 840671
Dollhouse	77 The Vennel	01506 847222
Elle Hair & Beauty	264 High Street	01506 842456
Eskimo Blonde	34a High Street	01506 847309
Eye Tec	Unit 18 Regent Centre	01506 847686
FI Hair	157 High Street	01506 842334
First Adventures Nursery	43a High Street	01506 844344
Flex Fitness	BBU: Unit 1-2	07402 030321



Greensteam Valeting	MR: 1 The Gateway	07871 145852
GrizzFit	MR: Unit 4 E-Net Park	07809 569455
Halliday Homes	23 High Street	01786 833811
Halo Beauty	74 High Street	07483 941070
Hendry Optometrists	17 High Street	01506 842751



Impressed Ironing & Cleaning	269 High Street	01506 840600
Kapital Kilts	114 High Street	01506 843658
Kidz Stop	17 Main Street	01506 239295
Kingfisher Club Crèche	MR: Unit 4 16 Mill Place	01506 846915
Kinneil Fitness	MR: 6a Avon Mill	07775 622620
Ladbroke's	Unit 16 Regent Centre	08000 223454
Language Room	273 High Street	01506 670009
Linlithgow Chiropractic	39 High Street	01506 844488
Linlithgow Dental Clinic	49 High Street	01506 847923
Linlithgow Physiotherapy	26c High Street	01506 238189
Linlithgow Podiatry	13 The Cross	01506 842781
Linlithgow Sports Podiatry	BBU: Unit 8	07596 954189
Linlithgow Travel	3 The Vennel	01506 846841
Linlithgow Tyres & Exhausts	29 Blackness Road	01506 843000
Lisa Ritchie Bespoke Brows	28 High Street	01506 888138
Lloyds Pharmacy	286 High Street	01506 670280
Lothlorien Dog Services	BBU: Unit 6	01506 843118
Lulu's Salon	BBU: Unit 7	01506 847659
Mackie & Brechin Vet	256 High Street	01313 333203



Massage Therapists	214 High Street	01506 551395
McNicol Vehicle Hire	63 Braehead Road	01506 842881
Paul Rolfe Estates	4 The Vennel	01506 844097
Police Station	93 High Street	101
Post Office	266 High Street	01506 845635
Regent Motors	MR: Unit 1, Block 6 Avon Mill	01506 847788
Relax and Heel	BBU: Unit 3	07913 817444
Robert Callander Opticians	61 High Street	01506 670766

Salon 2000	29 Mill Road	01506 493713
Simpson's Accident Repair	MR: Unit 2, Block 6 Avon Mill	01506 846211
Skin Happy	42 High Street	01506 888138
Specsavers	Unit D1 Regent Centre	01506 534484
Star Barbers	76 The Vennel	01506 848748
Tanz Tanning	187 High Street	01506 238210
Tarduff Motors	19 Mains Road	01506 842709
Timpson's	74 The Vennel	01506 671873
Top Cut Barber	82 High Street	01506 237794
Tranquil Room	129a High Street (Annexe)	01506 847722



Tru Barber	37 High Street	07502 743404
West Port Dental Practice	261 High Street	01506 842748
West Port Veterinary Clinic	8 Preston Road	01506 844165
Xcite Leisure Centre	McGinley Way	01506 237960



Linlithgow is always welcoming new shops, services, cafés, bars and much more. Keep up to date with the regularly-updated [business directory](#) on [mylinlithgow.com](#). Linlithgow is a Fairtrade-accredited town, best exemplified by “Fair Tradewinds” on the High Street (see “shops”, above).



GETTING TO LINLITHGOW

Linlithgow really couldn't be an easier journey from other towns, cities and travel hubs. Of course, it's best to use your preferred navigation app on your smartphone if you're driving, and check online for the most recent timetables if you're using public transport (*click "Getting to Linlithgow" at the top of this page*), but we've shown some simple travel planning options here.



Linlithgow is only 12 miles from Scotland's main airport in Edinburgh and 40 miles from [Glasgow Airport](#). From [Edinburgh Airport](#), drive along the airport road towards Ratho Roundabout. Join the M9 motorway from its start (heading towards Stirling) then turn off at junction 3, signposted Linlithgow. From there, turn left at the junction and follow the road straight into the town. You can't miss Linlithgow Palace on your right as you come into the town. A taxi from the airport to Linlithgow costs £40-£50. There's lots of additional information about travel connections on [edinburghairport.com](#).



If you're visiting us from a cruise liner docked at Rosyth/Leith/Queensferry, it's quick and easy to visit Linlithgow. It's only 20 minutes away by taxi (we've listed taxi companies on page 17). By train, just head to central Edinburgh (Waverley or Haymarket). Around 80 trains depart for Linlithgow daily from here, so you won't be waiting long. Once you're in the train, it's only 15 minutes to Linlithgow town centre!



The [X38 bus](#) runs every half-hour from various stops in Edinburgh (Regent Road, Drum Brae and Haymarket Station) and will take you to Linlithgow Bridge and Stockbridge Retail Park, as well as the town centre. During peak hours, buses are generally every half-hour, and if you prefer to take the train from Edinburgh, they leave from Haymarket and Waverley approximately every 20 minutes.

Useful Travel Links

[mylinlithgow.com](#)

[thetrainline.com](#)

[travelinescotland.com](#)

[edinburghairport.com](#)

[glasgowairport.com](#)

[firstbus.co.uk](#)

[lothianbuses.com](#)



ONE
LINLITHGOW

BUSINESS. COMMUNITY. ENTERPRISE

